

2020-21

California Montessori Project Sacramento County Re-Opening Plan – November 7th Update



Introduction

The California Montessori Project (CMP) is home to approximately 2,700 students and 500 staff members. We are a community that cares deeply about our collective well-being.

Due to the COVID-19 global pandemic, CMP ceased in-person schooling on March 16th and began offering Distance Learning to our students immediately. Nine out of ten CMP students participated regularly in Distance Learning in the spring of 2020, more than 600 Chromebooks were distributed, and CMP teachers provided a high quality, well rounded education to our students despite the challenges of the COVID-19 closure.

CMP began its 2020-21 school year in Distance Learning due to local public health conditions. We continue to regularly survey our families. Fully 90% of families say that CMP's 2020-21 Distance Learning program is superior to the Distance Learning they gave high marks to last Spring.

Still, we know that Distance Learning is no replacement for a high quality, in-person Montessori education. Since March, CMP has been planning how to safely bring students and families back to school.

We also know that we must adhere to federal, state, and local guidelines to keep our students and staff safe. This plan outlines how CMP intends to follow public health guidance while also providing the high quality, in-person Montessori education our students and families come to CMP to receive.

This plan also takes into consideration feedback from twelve surveys of CMP families and staff from May, June, July, September, and October.

Public Health Guidance

Throughout the COVID-19 global pandemic CMP has been guided by public health guidelines. Our reopening plans are consistent with the most recent federal, state, and local guidance. There are four anchor documents that CMP has used to craft its plans: the California Department of Education's "[Stronger Together Plan](#)", the California Department of Public Health's "[COVID-19 Industry Guidance: Schools and School-Based Programs](#)", the Sacramento County Office of Education's "[School Year Planning: A Guide to Address the Challenges of COVID-19](#)", and Sacramento County Public Health's "[Recommended COVID-19 Protocols for Schools: Addressing Potential Exposure and/or COVID-19 Positive Students, Teachers and Staff at School and in the Workplace](#)".



What CMP Families can Expect when Students Return to Campus



Please note that these plans are current as of November 7, 2020 and subject to change pending further public health guidance.

When students return to school, on-campus school will look much different than previous years due to new health and safety measures.

CMP will offer both distance learning and in-person options designed to meet the diverse needs of our students and families.

If a student is attending school in-person families can expect the following:

Screening at Home and School

- Families are recommended to take temperatures daily before going to school. Anyone with a fever of 100.4 F or higher should not go to school.
- Fever screening will also occur prior to the start of school by CMP staff via touchless thermometers.
- Students and adults should also screen themselves for respiratory symptoms such as cough or shortness of breath prior to coming to school each day. Students and adults experiencing those symptoms should not attend school.
- Families and staff will also complete a COVID-19 Screening Tool prior to coming onto campus via ParentSquare. The Screening Tool will look like the following:

This form applies to:

Me, Brett Barley

I would like to answer no to all questions

In the last 14 days, has anyone in your household had close contact with someone who has or is suspected to have COVID-19?

Yes
 No

In the last 48 hours, have you/your child(ren) experienced any of the following symptoms?

- Fever (over 100.4 °F)
- Headache
- Cough
- Sore throat
- Shortness of breath
- Chills
- Muscle aches
- Loss of taste and smell
- Gastrointestinal (nausea, vomiting or diarrhea)

Yes
 No

Electronic Signature Consent

By clicking the 'Submit' button below, I declare that the information I have provided is true

Your Name

Brett Barley

Email

bbarley@cacmp.org

Phone

Electronic Signature

Please type your full name

Full name must match exactly as provided to ParentSquare

Submit

** COVID-19 symptoms based on CDC recommendations*

Arriving at School

- Staff will be wearing masks.
- Parents, volunteers, and visitors will have limited access to the school campus (i.e. access only to the front office and pre-scheduled, essential meetings).
- Arrival and dismissal times may vary depending on grade level to limit group size at car loops.
- Arrival procedures will include fever screening.



General Safety Precautions Throughout the Day



- CMP will follow disinfection guidelines developed by local public health and the CDC
- Physical barriers will be installed in each school's front office.
- All students and staff will be encouraged to wash and clean hands regularly
- Handwashing stations with soap and/or hand sanitizer will be made available in all classrooms.
- Teachers shall ensure all students wash their hands using hand sanitizer or soap and water whenever entering and leaving the room.
- Students shall be taught and prompted to wash their hands using sanitizer or soap and water prior to eating, after coughing or sneezing, and before and after using the restroom.
- CMP will limit sharing of supplies and disinfect between uses when sharing is unavoidable.
- School facilities will be disinfected each day with CDC approved cleaning solutions and deep cleaned between cohorts (if in Hybrid Model).
- All drinking fountains will be turned off, and students will be encouraged to bring a water bottle that can be filled at a classroom sink or water bottle filling station.
- HVAC systems will be set to maximize circulation of air from outside buildings.
- Windows and doors will be kept open to the extent possible to keep fresh air flowing through indoor spaces.



Face Coverings and Other Safety Precautions

- Masks will be worn by staff and students, unless the staff member or student has a medical condition that would preclude them from wearing a mask. Students and staff that cannot wear a mask will wear a face shield.
- Pursuant to [California Department of Public Health Guidance](#), "schools must exclude students from campus if they are not exempt from wearing a face covering under CDPH guidelines and refuse to wear one provided by the school."
- Students are encouraged to bring their own washable and reusable mask.
- If a family does not have access to a mask CMP will provide one.
- All members of the public entering school offices are required to wear a face covering.
- Gloves are not recommended for use by students.
- Community snack will no longer be provided and birthday circles will be celebrated without food.



Social Distancing



Local public health departments are requiring that schools maintain six feet of social distancing between students and/or staff. To do so they recommend modifying schedules, limiting visitors,

keeping students in smaller groups, serving meals in small groups, spacing desks or student work spaces further apart, keeping student cohorts from mixing, staggering lunch/recess/transition times, not holding large assemblies and dances, and identifying a sick room for students that are not feeling well to minimize contact.

Surveillance Testing for CMP Staff

According to the [CDPH Reopening In-Person Learning Framework for K-12 Schools](#), once schools reopen it is recommended that surveillance testing be implemented based on the local disease trends.

CMP has been working closely with Sacramento County Public Health and will be participating in Sacramento County's Surveillance Testing Program for school employees.

Sacramento County is providing all teachers and school site staff access to dedicated, no-cost COVID-19 testing. This program is an important factor in being able to help to ensure COVID19 cases are isolated to prevent outbreaks.

The purpose of surveillance tests is to monitor the current state of the epidemic. It is used to monitor things like whether the COVID-19 virus is moving into new areas, whether it is affecting some groups of people more than other groups of people, or whether it is going up or going down.

However, it's also important to understand what surveillance doesn't mean. It does not mean that everybody gets tested. Instead, surveillance means that we test the right samples of the population in a way that allows us to make inferences as efficiently as possible.

Sacramento County's recommended frequency is testing all staff over two months, where 25% of staff are tested every two weeks, or 50% every month to rotate testing of all staff over time

Testing is available at 11 community sites and staff have already begun utilizing these sites.

Currently, the CDPH guidelines only include recommendations for testing of staff, there are no guidelines on the surveillance testing of students.

Where are the community based Free COVID-19 Testing sites?

MONDAY	8-4PM	Liberty Towers Church 5132 Elkhorn Blvd. Sacramento, CA 95842 Appointments: 916-583-8877 or https://libertytowers.setmore.com	9-5PM	La Familia Maple Neighborhood Center 3301 37th Ave., Room 7 Sacramento, CA 95824 (park on 36th Ave) Appointments: 916-990-1311 or https://lafamiliacovid.setmore.com
TUESDAY	8-4PM	Natomas Unified School District 1931 Arena Blvd. Sacramento, CA 95934 Appointments: 916-561-5253 or https://natomas.setmore.com	10-6PM	Cordova Neighborhood Church 10600 Coloma Rd. Rancho Cordova, CA 95670 Appointments: 916-361-8684 or https://folsomcordova1052.setmore.com
WEDNESDAY	8-4PM	Oak Hills Church 1100 Blue Ravine Rd. Folsom, CA 95630 Appointments: https://oakhills.setmore.com	9-5PM	Tetteh Pediatric Health 7248 S Land Park Dr., Suite 118 Sacramento, CA 95831 Appointments: http://bit.ly/TPH_CS_COVID19
THURSDAY	8-4PM	Chabolla Community Center 610 Chabolla Ave. Galt, CA 95632 Appointments: 209-366-7180 or https://galt5651.setmore.com	9-5PM	Robertson Community Center 3525 Norwood Ave. Sacramento, CA 95838 Appointments: 916-567-9567 or https://robertsonsc.setmore.com
FRIDAY	8-4PM	South Sacramento Christian Center 7710 Stockton Blvd. Sacramento, CA 95823 Appointments: 916-681-6791 or https://southsacchristiancenter.setmore.com	9-5PM	St. Paul's Missionary Baptist Church 3996 14th Ave. Sacramento, CA 95820 Appointments: (916) 573-3555 or https://stpaul039s3357.setmore.com

2020-21 Instructional Models

To meet the diverse needs of CMP families, CMP will offer both full time Distance Learning and in-person learning (the scale of which will be dependent upon public health guidance) during the 2020-21 school year.

Distance Learning

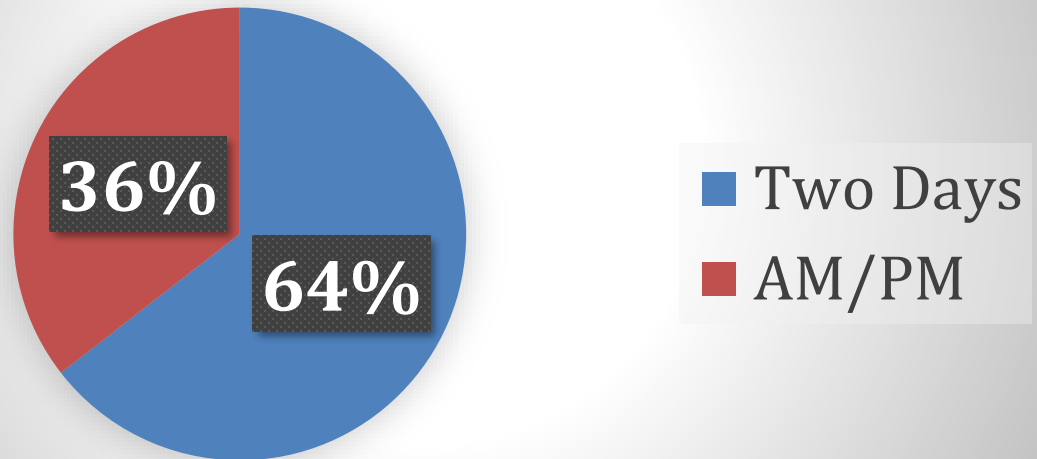
From our surveys we have seen that about twenty percent of CMP families would like to remain in Distance Learning during the 2020-21 school year. Another twenty-five percent of families have not yet made their decision. CMP has developed a program to meet the needs of all families.

CMP students selecting full time Distance Learning will continue to be a part of the CMP community they have come to know and love. They will be provided with a Distance Learning teacher and will continue with a Distance Learning program similar to what they experienced this fall. Families selecting full time Distance Learning should know that their teacher could change depending upon their current teacher's assignment for Hybrid Learning or Distance Learning.

In-Person Hybrid Model

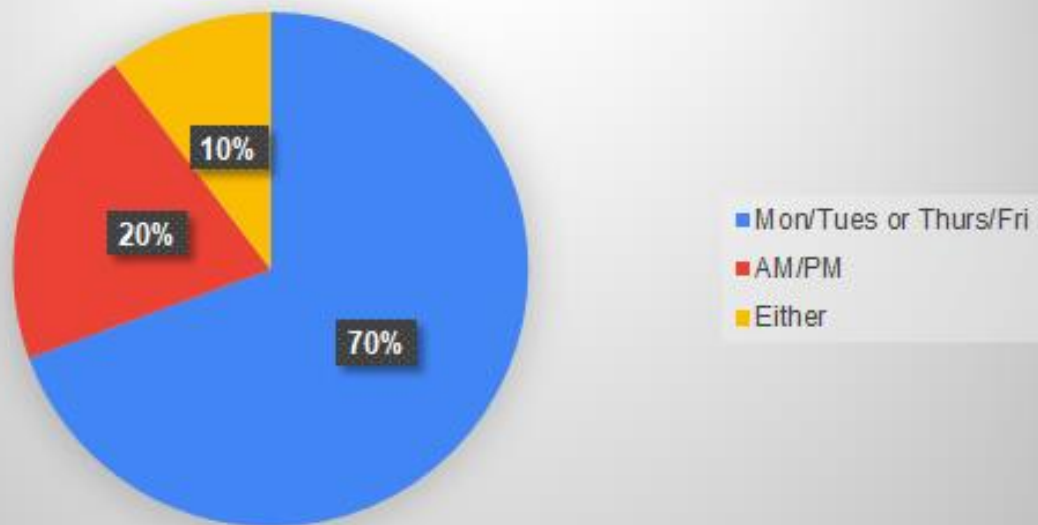
CMP surveyed our staff and families multiple times and determined that if we are not able to maintain the six feet of social distancing we would implement a hybrid model that limited the number of students on site each day. In our most recent surveys 64% of CMP staff working in Sacramento County said they would prefer a two-day rotation.

Sacramento County Staff Hybrid Survey Results



70% of families said they would prefer a two-day model, 20% preferred an AM/PM model, and 10% approved of both models.

Preferred Hybrid Model



After multiple discussions and surveys with staff and families, the CMP Board selected a model that prioritizes both in-person learning and safety. The model allows students to attend two full

days of school, participate in three days of at-home learning, and provides CMP with a full day to clean and disinfect our schools between cohort groups. Teachers have been given the draft schedules below and were asked to use these schedules as a starting point for crafting their classroom schedules. Parents can expect to receive more detailed, class specific, schedules from their teachers prior to the start of the Hybrid Model.

Families selecting the Hybrid Model should know that their teacher could change depending upon their current teacher's assignment for Hybrid Learning or Distance Learning.

Example Monday/Tuesday and Thursday/Friday Schedule

* On-Campus Student View

	Monday	Tuesday	Wednesday	Thursday	Friday
	Cohort A	Cohort A	Distance Learning	Cohort B	Cohort B
8:00am	Symptom Checks	Symptom Checks		Symptom Checks	Symptom Checks
8:30am	Start of School Day	Start of School Day	Whole Class Zoom	Start of School Day	Start of School Day
9:00am	Whole Class Meeting (Cohort B on Zoom)	Whole Class Meeting (Cohort B on Zoom)	Asynchronous Learning	Whole Class Meeting (Cohort A on Zoom)	Whole Class Meeting (Cohort A on Zoom)
9:30am-12:00pm	Montessori Lessons and Work Time	Montessori Lessons and Work Time	Interventions Counseling/Library Art/PE/VAPA	Montessori Lessons and Work Time	Montessori Lessons and Work Time
12:00pm-12:30pm	Lunch	Lunch	Lunch	Lunch	Lunch
12:30pm - 1:30pm	ELA	ELA	Asynchronous Learning	ELA	ELA
1:30pm - 2:30pm	Math	Math		Math	Math
2:30pm – 3:00pm	Science and Social Studies	Science and Social Studies	Interventions Counseling/Library Art/PE/VAPA	Science and Social Studies	Science and Social Studies
3:00pm	End of Student Day	End of Student Day		End of Student Day	End of Student Day

Example Monday/Tuesday and Thursday/Friday Schedule

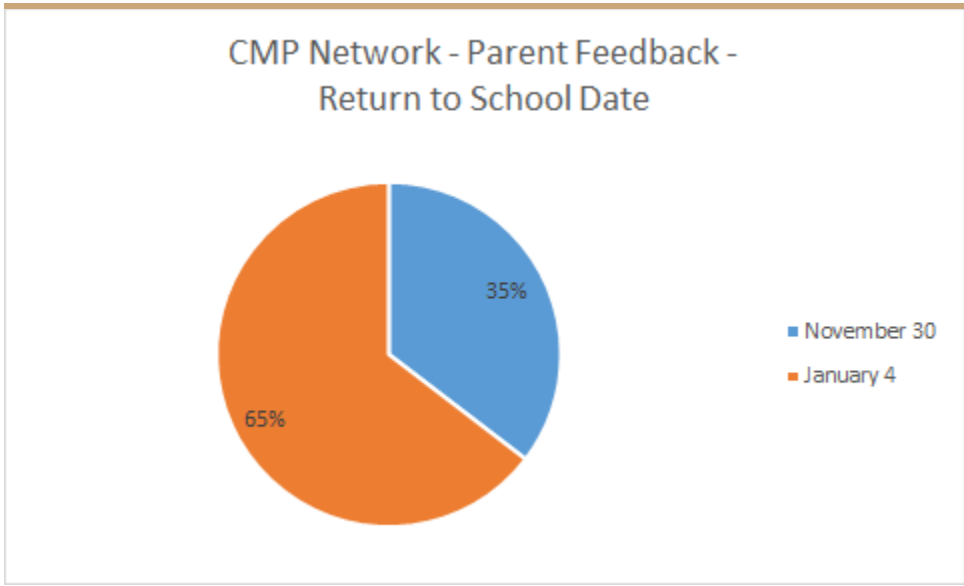
*at home student view

	Monday	Tuesday	Wednesday	Thursday	Friday
	Cohort B	Cohort B	Distance Learning	Cohort A	Cohort A
8:30am (Potential Reading/Math Support Time)	Start of School Day (Google Classroom, Set Up Work Space, Finish Unfinished Work)	Start of School Day (Google Classroom, Set Up Work Space, Finish Unfinished Work)	Whole Class Zoom	Start of School Day (Google Classroom, Set Up Work Space, Finish Unfinished Work)	Start of School Day (Google Classroom, Set Up Work Space, Finish Unfinished Work)
9:00am	Whole Class Meeting (Cohort B on Zoom)	Whole Class Meeting (Cohort B on Zoom)	Teacher Assigned Work Rosetta Stone Keyboarding Independent Reading iReady Catch Up Counseling/Library Art/PE/VAPA Interventions	Whole Class Meeting (Cohort A on Zoom)	Whole Class Meeting (Cohort A on Zoom)
9:30am-11:30PM (Potential Reading/Math Support Time and TA Help Desk)	Follow-Up Montessori Work iReady Reading Independent Reading iReady Math	Follow-Up Montessori Work iReady Reading Independent Reading iReady Math		Follow-Up Montessori Work iReady Reading Independent Reading iReady Math	Follow-Up Montessori Work iReady Reading Independent Reading iReady Math
11:30am-12:00pm (Flexible)	Counseling/Library Art/PE/VAPA	Counseling/Library Art/PE/VAPA		Counseling/Library Art/PE/VAPA	Counseling/Library Art/PE/VAPA
12:00pm-12:30pm	Lunch	Lunch	Lunch	Lunch	Lunch
12:30pm - 1:30pm (Flexible)	Counseling/Library Art/PE/VAPA	Counseling/Library Art/PE/VAPA	Teacher Assigned Science and Social Studies	Counseling/Library Art/PE/VAPA	Counseling/Library Art/PE/VAPA
1:30pm – 3:00pm (Potential Reading/Math Support Time and TA Help Desk)	Reading/Math Follow Up, Science and Social Studies	Reading/Math Follow Up, Science and Social Studies	Counseling/Library Art/PE/VAPA Interventions	Reading/Math Follow Up Science, Social Studies, Cultural	Reading/Math Follow Up Science, Social Studies, Cultural
3:00pm	End of Student School Day	End of Student School Day	End of Student School Day	End of Student School Day	End of Student School Day

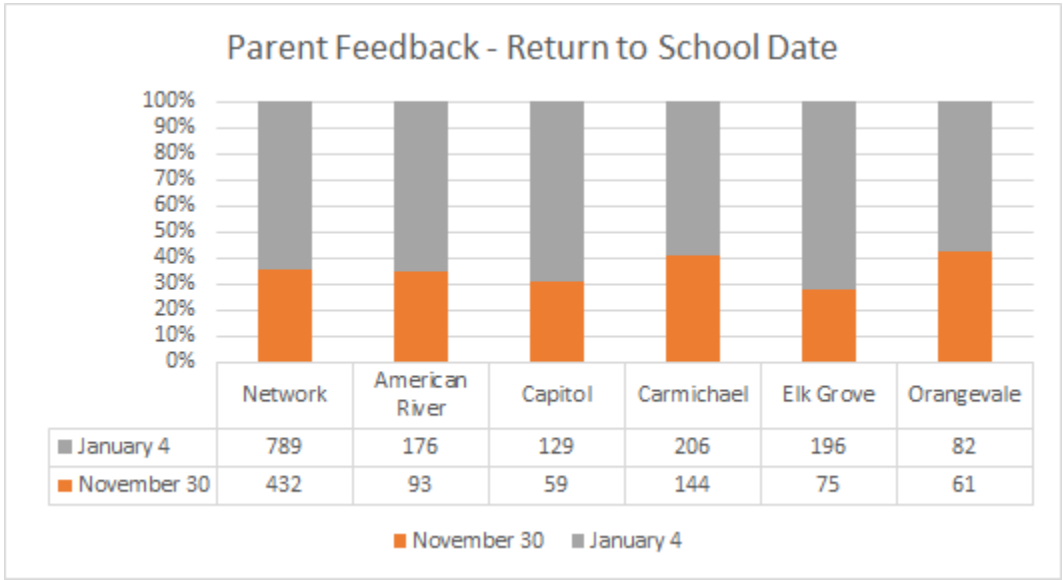
Hybrid Learning Start Date

CMP surveyed its staff and families in October to determine what start date for Hybrid Learning would make the most sense for the majority of the CMP community. There was agreement across both staff and families at every CMP campus in Sacramento County that a January start date made the most sense.

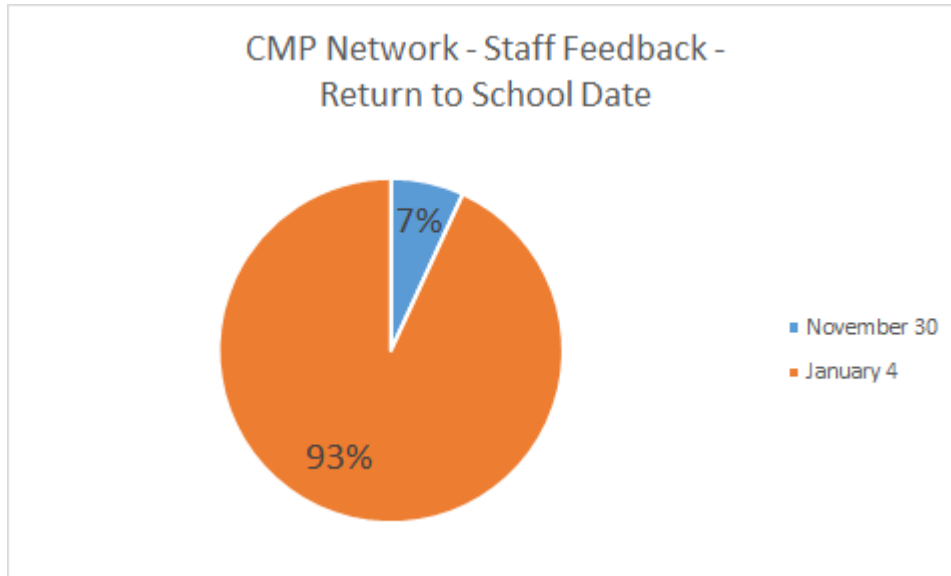
65% of families, out of 1,221 submissions, preferred the January 4th reopening date across all CMP Sacramento County schools.



There was also a clear preference for a January start date at each individual campus.



93% of CMP staff preferred the January 4th Hybrid Learning start date.



Given the consistency in feedback across CMP campuses between both staff and families CMP will move forward with a January 4th start date for Hybrid Learning.

Full Time In-Person Learning

A CMP school site(s) may be able to offer Full Time In-Person learning five days a week if enough families select full time Distance Learning and there is sufficient space to comply with the six-foot social distancing requirements.

Based on our October survey results there are currently not enough families selecting Distance Learning to allow for Full Time In-Person learning while complying with the six-foot social distancing requirements but CMP will continue to monitor Distance Learning participation to see if this becomes a possibility in the future.

Considerations for Quarantine, Partial Closure, Complete Closure, and Return to Distance Learning

CMP has been working closely with Sacramento County Public Health and has been provided with guidance for multiple scenarios for students or staff that may be experience symptoms or

test positive. For the COVID-19 public health purposes “[a contact is defined as a person who is less than 6 feet from a case for more than 15 minutes](#)”.

Scenario 1

A student or staff member responds “yes” to one of the health screening questions, has a temperature of 100.4 or above, and/or exhibits symptoms of COVID-19.

Recommended Actions

- The cohort remains open.
- The student or staff member should not enter the building, should be sent home, and self-isolate until symptoms have resolved for 72 hours.
- The student or staff member should contact their healthcare provider to determine if testing is advised.

Scenario 2

A student or staff member lives with or has been in close contact with a person who has tested positive for COVID-19.

Recommended Actions

- The cohort remains open.
- The student or staff member is expected to report this to the site administrator immediately, is excluded from the cohort, and they and all household members should quarantine, monitor symptoms, and contact their health provider to schedule testing.
- The site administrator should gather any additional information regarding details of known contact and share this information with Sacramento County Public Health (SCPH).
- SCPH will advise of any additional next steps including support of expedited testing if advised.

- If the student or staff member has siblings, family or household members at other school sites with possible exposure they should be excused from school and SCPH contacted to assess exposure risk and determine disposition (e.g. exclude from cohort).
- All families of students and staff members of the cohort should be notified that a student or staff member has a household member that has tested positive for COVID-19.

Scenario 3

A student or staff member of a cohort tests positive for COVID-19.

Recommended Actions

- The cohort will be closed for 14 days from last known exposure.
- All families of students and staff members of the cohort should be notified with a phone call followed by a letter that a student or staff member in the cohort has tested positive. Students and staff should be quarantined for 14 days from date of last known contact.
- The entire cohort of staff and students should be tested working directly with their healthcare providers and/or SCPH.
- Further testing of family members may be advised based on cohort test member results.

Scenario 4

A student or staff member who has quarantined or isolated for any of the reasons in scenarios one, two or three and is tested - and tests negative.

Recommended Actions

- The cohort remains open.
- Even though the student or staff member has tested negative, if the student or staff member has had close contact with an individual that has tested positive for COVID-19, they must remain in quarantine or isolation for 14 days from last known contact with the individual.

- All families of students and staff members of the cohort should be notified that the student or staff member tested negative.

Scenario 5

A staff member has been in close contact with someone who is symptomatic and is scheduled to be tested.

Recommended Actions

- The staff member is asked to provide details of timing and duration of contact, continue to monitor health, follow all health and safety protocols, and is provided information on testing for essential workers.
- If close contact tests positive go to Scenario #2.
- If tested for COVID-19, the staff member is expected to notify their supervisor of test results as soon as possible.

What are the criteria for closing a school?

Individual school closure is recommended based on the number of cases, the percentage of the teacher/students/staff that are positive for COVID-19, and following consultation with the Local Health Officer. Individual school closure may be appropriate when there are multiple cases in multiple cohorts at a school or when at least 5 percent of the total number of teachers/student/staff are cases within a 14-day period, depending on the size and physical layout of the school.

The Local Health Officer may also determine school closure is warranted for other reasons, including results from public health investigation or other local epidemiological data.

If a school is closed for in-person learning, when may it reopen?

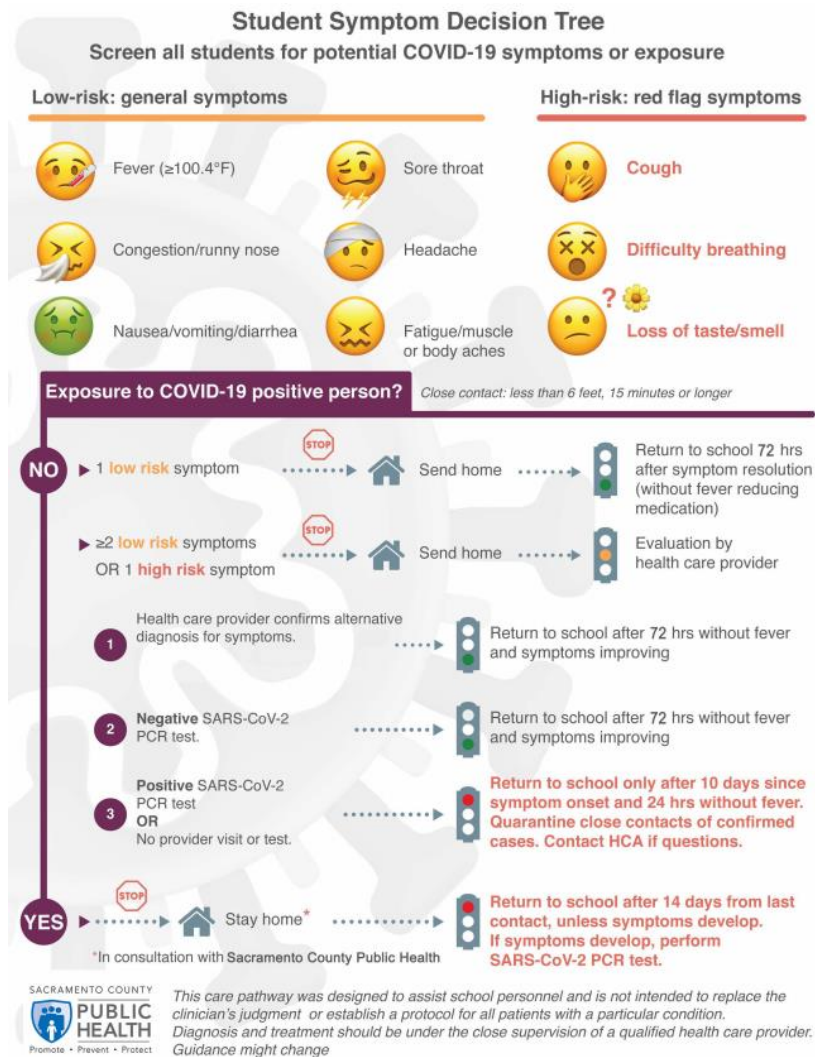
Schools may typically reopen after 14 days and the following have occurred:

- Cleaning and disinfection

- Public health investigation
- Consultation with the local public health department

In the event of a classroom or school closure, teachers will be prepared to shift to providing Distance Learning that incorporates a combination of direct instruction and independent learning activities.

CMP also encourages families to familiarize themselves with the Sacramento County Student Symptom Decision Tree below:



The precautions we are taking now, with your assistance, will help ensure that CMP does not have to close and disrupt student learning.

Special Education and Students on a 504 Plan

CMP continues to be committed to meeting the needs of students with disabilities who are on a 504 plan or receiving special education services and offering a free and appropriate public education in the least restrictive environment. Parent and staff input through meetings and surveys will help CMP identify the best way to execute the services, regardless of the reopening model selected. The Special Education Department is currently reviewing this information and student paperwork to support campuses in creating schedules and service offerings to help students continue to make progress. In addition, the following will be taken into account:

- Accommodations that may be needed in the distance learning environment
- Assistive technology that may be needed during distance learning
- A review of services that lend themselves better to a virtual environment
- Continued assessment of progress and possible regression of skills

As special education staff start the new school year, parents of students with disabilities who receive services will be contacted by the case manager to discuss service details and more global information will be sent through ParentSquare.

During Distance Learning CMP is also following [CDPH Cohort Guidance related to student cohorts](#) and has been bringing students to campus for services in alignment with that guidance.

Student and Family Resources

Social Emotional Well-Being

- CMP has school counselors and school psychologists ready to lend a hand at every campus.
- CMP has a robust social emotional curriculum that can be taught in person or virtually at each campus.
- CMP has developed a bank of resources for families in need of support.
- CMP has developed a website dedicated to social emotional learning.



Field Trips, Sports, and Extracurricular Activities



- Public Health Departments are not recommending field trips.
- CMP will provide virtual field trips to students and will monitor guidance to see if field trips will be recommended in the future.
- Public Health Departments are not recommending assemblies, dances, and rallies.
- CMP will work to find ways to bring students and families together virtually or in-person in a safe socially distanced manner.
- CMP has historically offered sports during the school year. Two of our most popular sports (i.e. Volleyball and Basketball) are not recommended. CMP will review guidelines to see when Volleyball, Basketball, and other sports may be able to be brought back and will investigate offering other permissible sports (Tennis, Cross Country, Track and Field, etc.)

- In-person music instruction is not recommended. CMP will seek to provide virtual music enrichment.

Club M

- CMP will not be able to offer Club M opportunities at this time but will look to bring Club M back as public health conditions allow.



CMP's Ten Commitments to Learning During the 2020-21 School Year

1. We will ground our approach in Montessori methodology and equity to take a tailored approach to meeting the individual needs of each student.
2. We will prioritize student, staff, & community safety.
3. We will support the physical and mental well-being of students and staff and integrate social-emotional learning into our instructional core.
4. We will measure student engagement; seek to keep students engaged, motivated, and healthy; and take immediate action when we see students not fully engaging.
5. We will continue student learning by teaching new content across a well-rounded curriculum.
6. We will focus instruction on the mastery of essential standards.
7. We will provide "live" class instruction every day.
8. We will provide feedback on student work through the use of rubrics and/or grades.
9. We will authentically engage and collaborate with each other in all phases of re-opening planning, implementation, and communication.
10. We recognize that families have different circumstances and commit to meeting families where they are and providing support to the best of our abilities.